

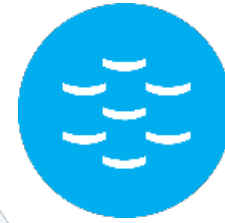
EMBRC-ERIC: A platform for Innovation

Ilaria Nardello, Executive Director

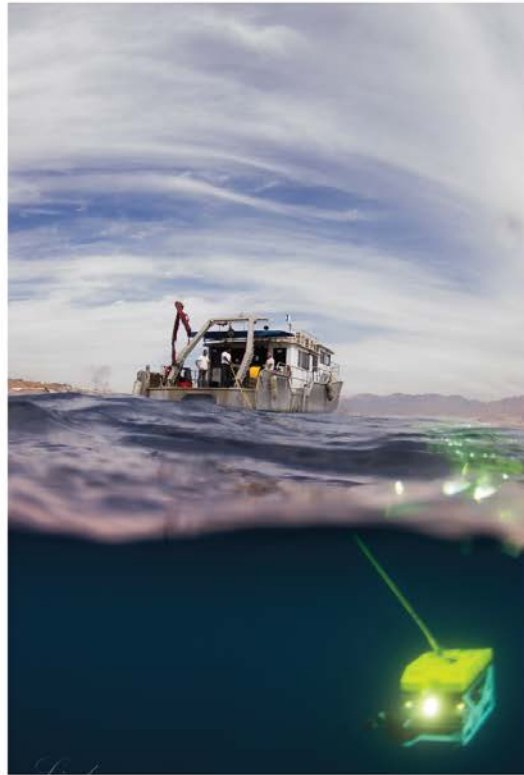
CORBEL Workshop: BMS Ris boosting Innovation by
Open Access

EU Thon Hotel, Brussels

20 June 2017



EMBRC
EUROPEAN
MARINE
BIOLOGICAL
RESOURCE
CENTRE

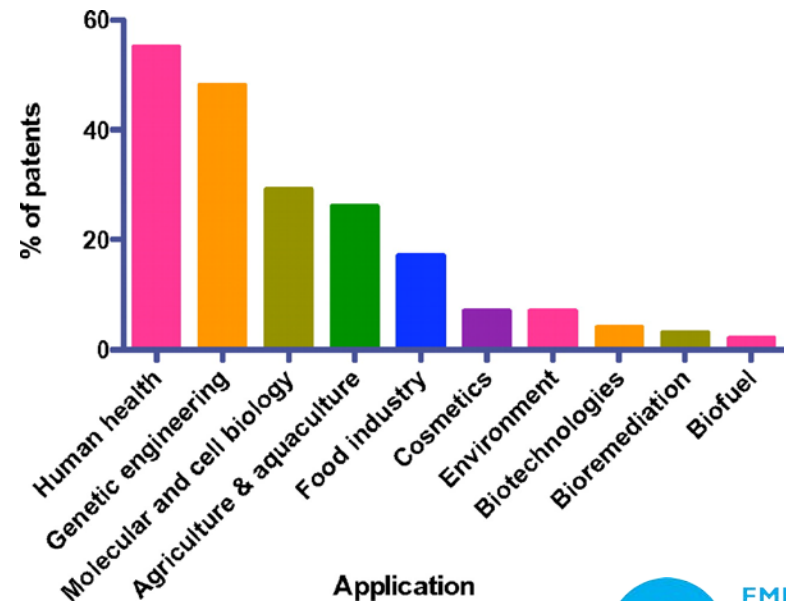
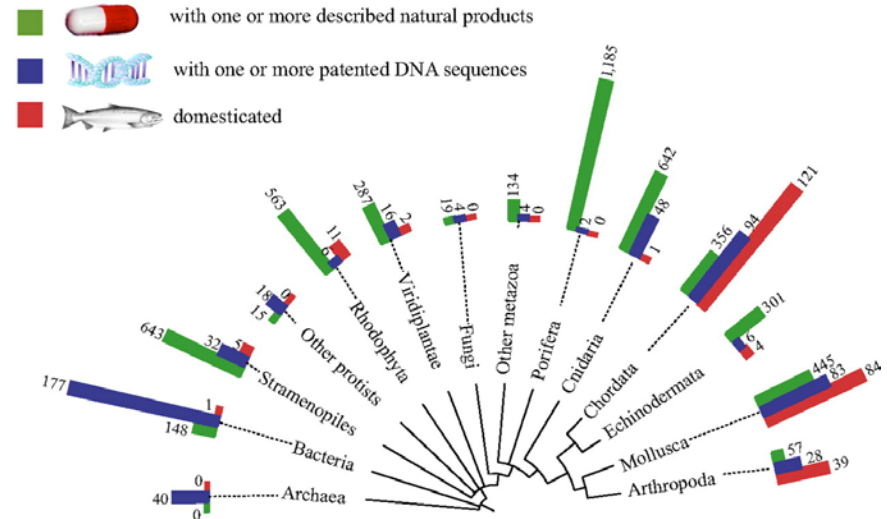


EMBRC-ERIC: a platform for innovation

Marine biodiversity constitutes an under-tapped resource within the European Research Area. Marine organisms are rapidly becoming important for Research, Technology Development and Innovation (RTD&I) in the life sciences, and as a source of innovative products and services for society, from biomedical products to food and energy solutions.

Acting at the interface between biomedical and environmental sciences, and the biotechnology sector, EMBRC-ERIC will play a key role in unlocking the potential of the marine realm for new concepts, as a driver for technology development and industry innovation, and supporting the needs for knowledge, technology, materials and models to tackle Societal Grand Challenges.

Number of described marine species



Access

Fundamental Biological Sciences & Marine Biology



Translation

Biomedical Sciences and Applications

Environmental Sciences and Applications

Education and Training

Long Term Monitoring

Translation

Marine Model Organisms & Omics Technology

The ERIC ultimately generates the necessary conditions to enable a sustainable framework around the EMBRC Operators and for a competitive and sustainable European blue bioeconomy sector.

Value Proposition

A single-entry point: the EMBRC-ERIC website will centralize all the information and access procedures;

Access to an **exclusive portfolio of services and unique data:** EMBRC-ERIC will represent excellent European marine resources, with access to natural areas, biological systems, marine data, state-of-the-art technology, excellent expertise, that will ensure quality-controlled delivery of the services;

Immediate and simultaneous consultation of world class research services throughout Europe: EMBRC-ERIC will enable the comparison of the best matching offers corresponding to User needs, from all available infrastructures;

Coordination of multiple facilities and services, even in different geographic locations, to respond to complex user requests: by centralizing the services from different Nodes, EMBRC-ERIC will enable the building of projects using resources from several locations and optimize the service rendered;

Quality assured processes thanks to **standard operational procedures** (ex. Reduced lead-time, an answer within 15 days...), with the support of EMBRC-ERIC headquarter staff and Node liaison officers;

Simplification of administration procedures (contract/invoice, currency, reference...): EMBRC-ERIC will be the single contractor with the users, even for projects requiring different services.

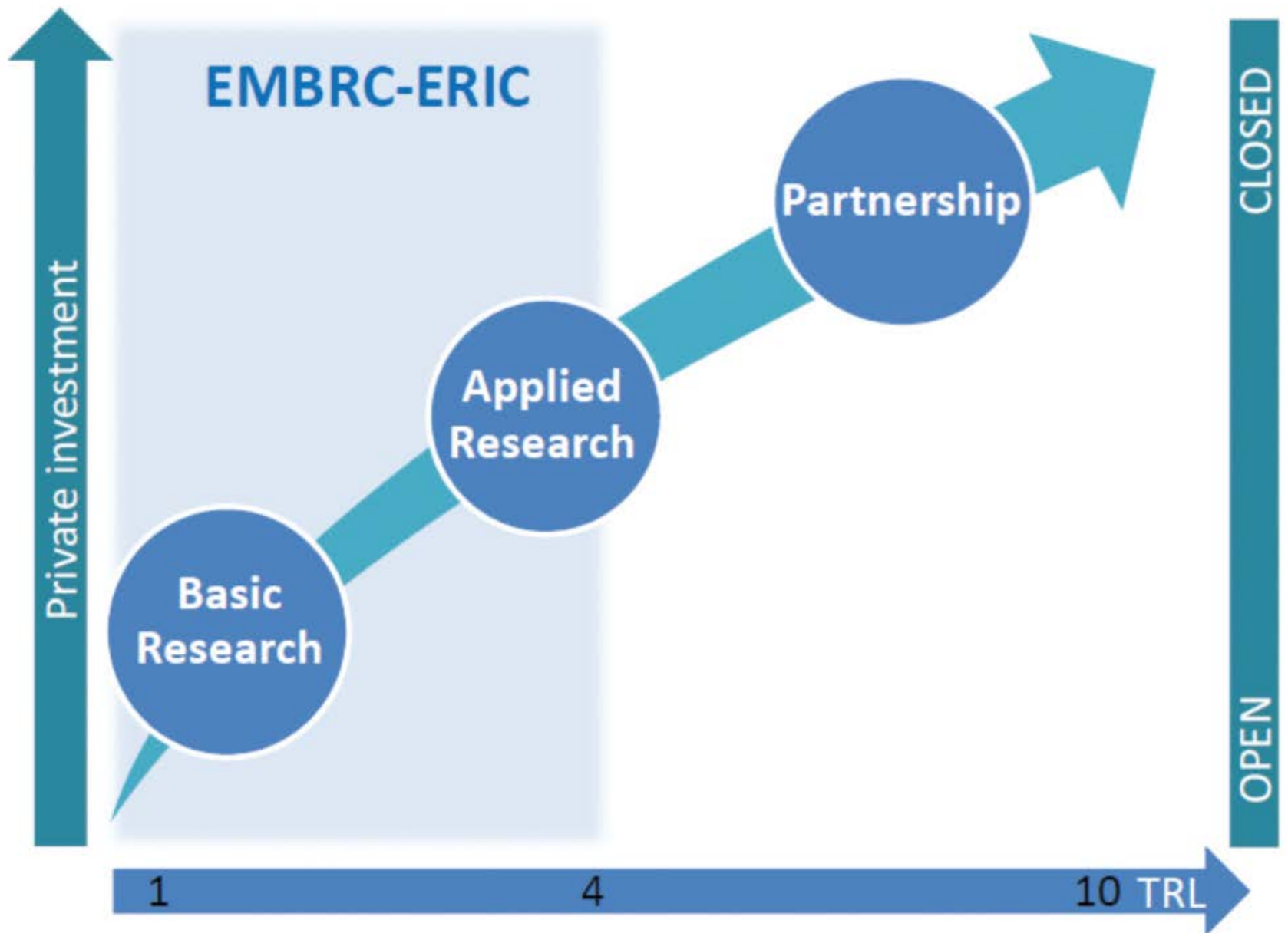
Knowledge for Innovation

- **Tech-Know-Logy Promotion;**
- **Blue Regional Innovation Centres (BRICS);**
- **Address Technology Readiness Level (TRL);**
- **Liaison Officers as Tech-KNOW-logy Brokers;**
- **Industry-targeted brokerage meetings;**
- **More open Technology-Transfer culture;**
- **Collaboration with Regions;**
- **Interoperability with cognate RIs;**
- **Training for Industry.**

BRICs (Blue Regional Innovation Centers)

EMBRC-ERIC will support the progressive professionalization of the Operators' Access Services

BRIC Stages	TRL	Level of services	Organisation criterias	Impact
1 - Onset	Pre competitive	EMBRC charter of access	In-house, small	Local
2 - Towards innovation	Proof of concept/feasibility	Quality practices	In house, separate facilities	Regional
3 - Incubator	Demonstration /Commercialisation	One person dedicated or more	Physically independent	National
4 - Science park	Product on the market place	Dedicated team and services	Physically and legally independent	EU/Global



EMBRC-ERIC is involved in a number of EU projects, which consolidate and integrate the RI community, linking cognate RIs and providing interoperability practices, standardised procedures for data-gathering, -handling, -calibration and -storage, continuous workflows across RI platforms, and common open platforms for data sharing.



embric.eu



corbel-project.eu



envriplus.eu

European Marine Biology Resource Centre Preparatory Phase 2 project (PP2_EMBRC)

Memorandum of Understanding

between

the European Marine Biological Resource Centre (EMBRC),
the Conference of Peripheral Maritime Regions (CPMR)
and the Regions
for collaborative work



global reach

CRBM Quebec (CA)

MBCOI South Carolina (USA)

- MoUs
- Bilaterals

Brazil
(U. Sao Paolo)

- S. Atlantic Treaty
- AIR

EU



- MoUs
- Bilaterals

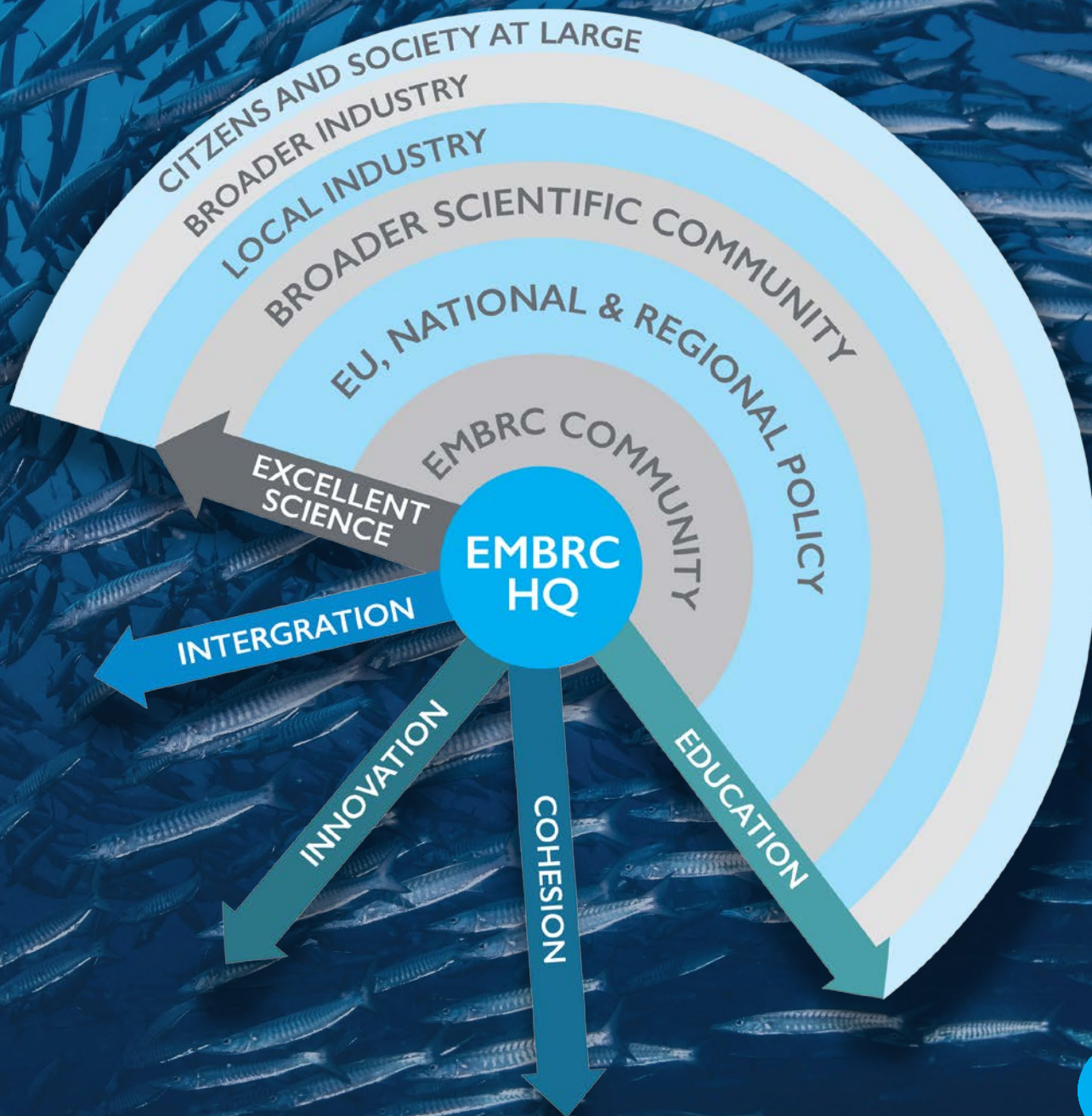
INDIA

China
(Ocean University, Quindao)

Blue Med

North Africa
S. Africa

impact



EMBRC
EUROPEAN
MARINE
BIOLOGICAL
RESOURCE
CENTRE

Thank you



EMBRC
EUROPEAN
MARINE
BIOLOGICAL
RESOURCE
CENTRE

EMBRC-ERIC Headquarters

4 Place Jussieu, 75252 Paris Cedex 05 (FR)
Tower 46/00, 1st floor, bureau 101
Letterbox 93
e: info@embrc.eu
t: +33.1.44.27.63.37

www.embrc.eu

ESFRI

