

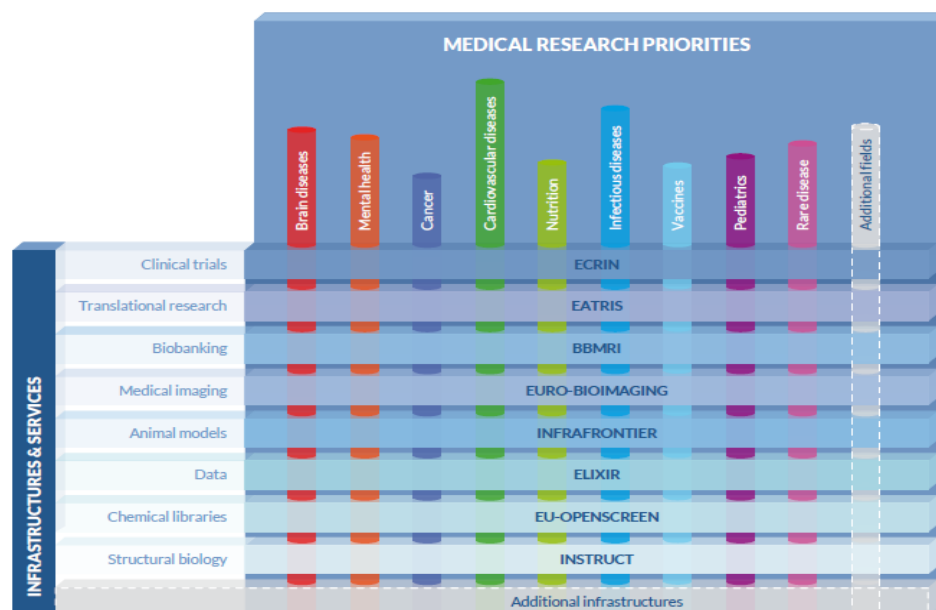
Medical Infrastructure-Users Forum

Paris, October 15th, 2018

The CORBEL Medical Infrastructure/ Users Forum (MIUF, WP3.1) is designed to promote close collaboration, at the pan-EU level, between medical research communities, funding bodies, and medical research infrastructures. In particular, its mission consists of promoting the establishment of pan-European scientific communities, providing the scientific content and access to patients; clearly defining the respective roles of infrastructures vs. scientific communities, avoiding gaps, overlaps and fragmentation ; capturing the needs of the scientific communities and of the funders in terms of infrastructure services ; and of ensuring the appropriate development and deployment of these services by one or multiple research infrastructures.

The October 2018 MIUF meeting is intended to discuss

- *the structuring of medical research communities at the pan-European level*
- *the emerging needs of medical research projects in the context of the big data and personalised / stratified medicine approach*
- *and the challenges raised in terms of development and deployment of data services*



Programme:**10:30 registration & coffee****11:00 Introduction** (*J. Demotes*)**11:10 Structuring medical research communities at the pan-European level**

- ECRAID – European Clinical Research Alliance on Infectious Diseases (*H. Goossens*)
- EBRA – European Brain Research Area (*M. Dorlöchter*)
- TRANSVAC2 - European Network of Vaccine Research and Development (*O. Leroy*)
- C4C – Conect4children (*C. Giaquinto*)
- European Joint Programme Rare Diseases (*D. Julkowska*)

12:45 lunch**13:45 New models for medical research in Europe: success stories**

- Organic bioelectronics sensors for Point-of-Care: the ENM III project AMI (*F. Biscarini*)
- Image analysis and machine learning (*S. Klein*)
- A virtual environment for structural biology infrastructure (*S. Daenke*)
- Bridging the academia-industry divide with cutting-edge science: a case study (*B. Kuhnast*)

15:00 New approaches in personalised medicine and patient stratification

- R-Link: Optimizing response to Lithium treatment through personalized evaluation of individuals with bipolar I disorder (*F. Bellivier*)
- ImmunAID - Immunome project consortium for AutoInflammatory Disorders (*B. Fautrel*)
- NECESSITY - NEw Clinical Endpoints in primary Sjögren's Syndrome: an Interventional Trial based on stratifying patients (*J-E. Gottenberg*)

16:00 coffee break**16:30 Data sharing and reuse**

- Multimodal data management: TraIT (*J-W. Boiten*)
- Sharing and reuse of clinical trial data (*C. Ohmann*)
- Reuse of national health database for cohort follow-up: CONSTANCES (*M. Zins*)
- Sensitive data services of EOSC-Hub project (*G. Sipos*)

17:45 round table discussion

- *Distribution of roles between pan-European scientific communities and pan-European research infrastructures*
- *Role of funders in the pan-European structuring and multinational projects*
- *Reuse of health data for observational and interventional research*
- *Other*

18:30 end of the meeting


Meeting venue: Sorbonne Université – Campus Pierre et Marie Curie, 4 place Jussieu, PARIS

The meeting will take place in the room **108** (1st floor) located in the **ZAMANSKY tower** (see map below)

Nearest Metro station:  **7**  **10** **JUSSIEU**

If you arrive by car, there is a free underground parking; the entrance is located Rue des Fossés Saint-Bernard (tower 12, see map below)

DIRECTIONS FROM CHARLES DE GAULLE AIRPORT TO THE MEETING

 From Charles de Gaulle Airport, take RER line B (direction Robinson or St Rémy les Chévreuse) to Chatelet station, change to the metro line 7.

 From Chatelet, take metro line 7 (direction Villejuif or Mairie d'Ivry) to Jussieu station


Fare: €10 approx. (single journey)


Journey time: Approx. 1 hour

Frequency: Every 5 minutes on weekdays

DIRECTIONS FROM ORLY AIRPORT TO THE MEETING

From Orly Airport take the **'Paris par le train'** shuttle bus to Pont de Rungis – Aéroport d'Orly station.

 From Pont de Rungis - Aéroport d'Orly station, take the RER line C to Gare d'Austerlitz station (direction Pontoise or St-Quentin en-Yvelines or Versailles Château), change to the metro line 10.

 From Gare d'Austerlitz, take metro line 10 (direction Boulogne-Pont de Saint Cloud) to Jussieu station

Fare: €6.50 approx. (single journey)

Journey time: Approx. 45 minutes

Frequency: Every 15 minutes on weekdays

DIRECTIONS FROM GARE DU NORD TRAIN STATION TO THE MEETING

 From Gare du Nord, take metro line 4 to Gare de l'Est station (direction Montrouge), change to Metro line 7.

 From Gare de l'Est, take metro line 7 (direction Villejuif or Mairie d'Ivry) to Jussieu station

Fare: €1.90 approx. (single journey)

Journey time: Approx. 30 minutes

