



# For the Advancement of Science – Working With Biomedical RIs

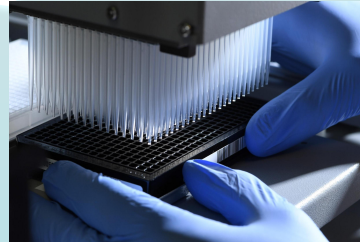
4<sup>th</sup> and final AGM, 2.3.2020, Brussels

Chair: Frauke Leitner (Euro-Biolmaging) and Sonja Hansen (MDC)

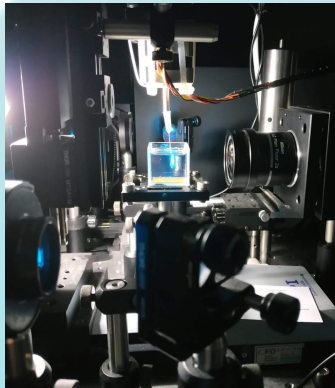
---



## CORBEL Mission



Harmonizing access  
and services across RIs  
and across  
cutting-edge  
technology  
platforms...

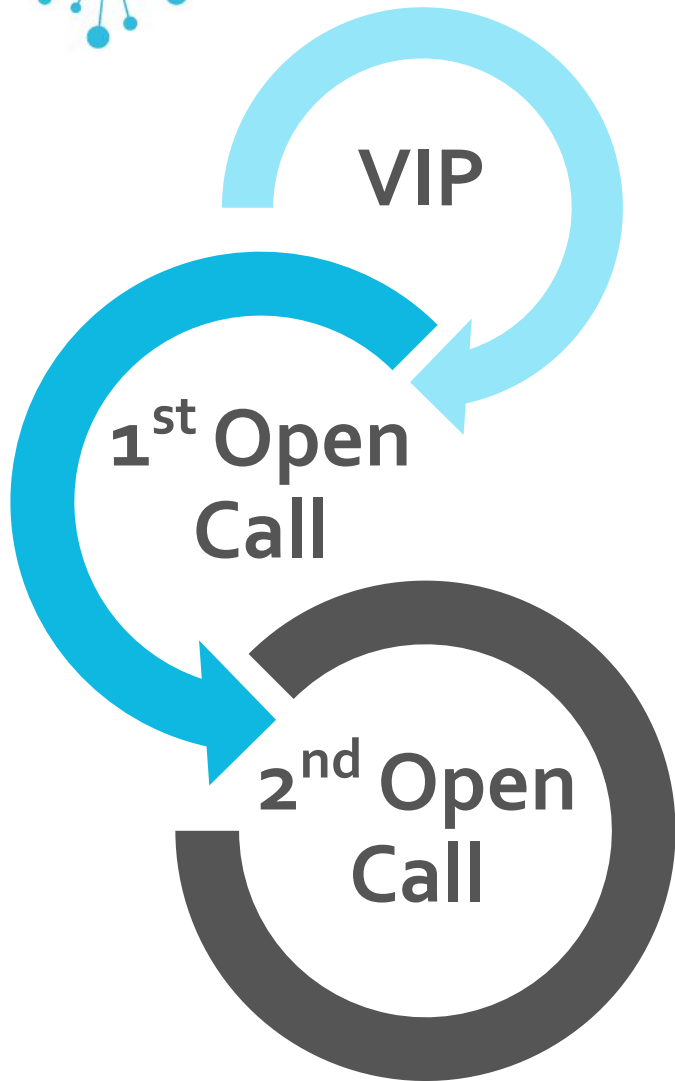


...for supporting  
modern and pioneering  
research





## WP4: Piloting the provision of open user access across Research Infrastructures



### Step 1: VIP projects

- Build on **pre-existing** RI user contacts
- Quickly establish **joint access procedures**

### Step 2: 1<sup>st</sup> Open Call

- **Public advertisements** to the European research community at large
- **High publicity and visibility** for life science RIs
- Provision of **unbiased, open access**

### Step 3: 2<sup>nd</sup> Open Call

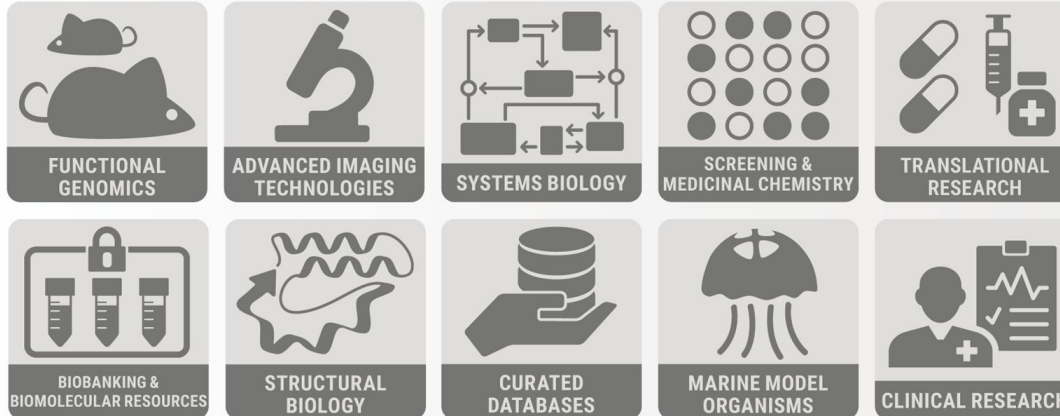
- Incorporating user and service provider **feedback**
- **Improving** processes, communication, selection criteria
- **Widening service portfolio** by linking to medical RIs



# CORBEL Open Call - access across life science RIs

## ACCESS TO MULTIPLE RESEARCH INFRASTRUCTURES

PROJECT  
IDEA



SCIENTIFIC  
RESULTS

## PLANNING SUPPORT

- Open Call offered **access to cutting-edge technologies and services at more than 20 service providers from 10 European RIs**
- Successful projects receive **constant support** from Open Call project managers
- **CORBEL funds are used to cover requested access and for travel grants for users**
- Users are both from **academia and industry**





## Supporting advanced research projects across Europe

### Applicant profiles

#### Organisation legal status

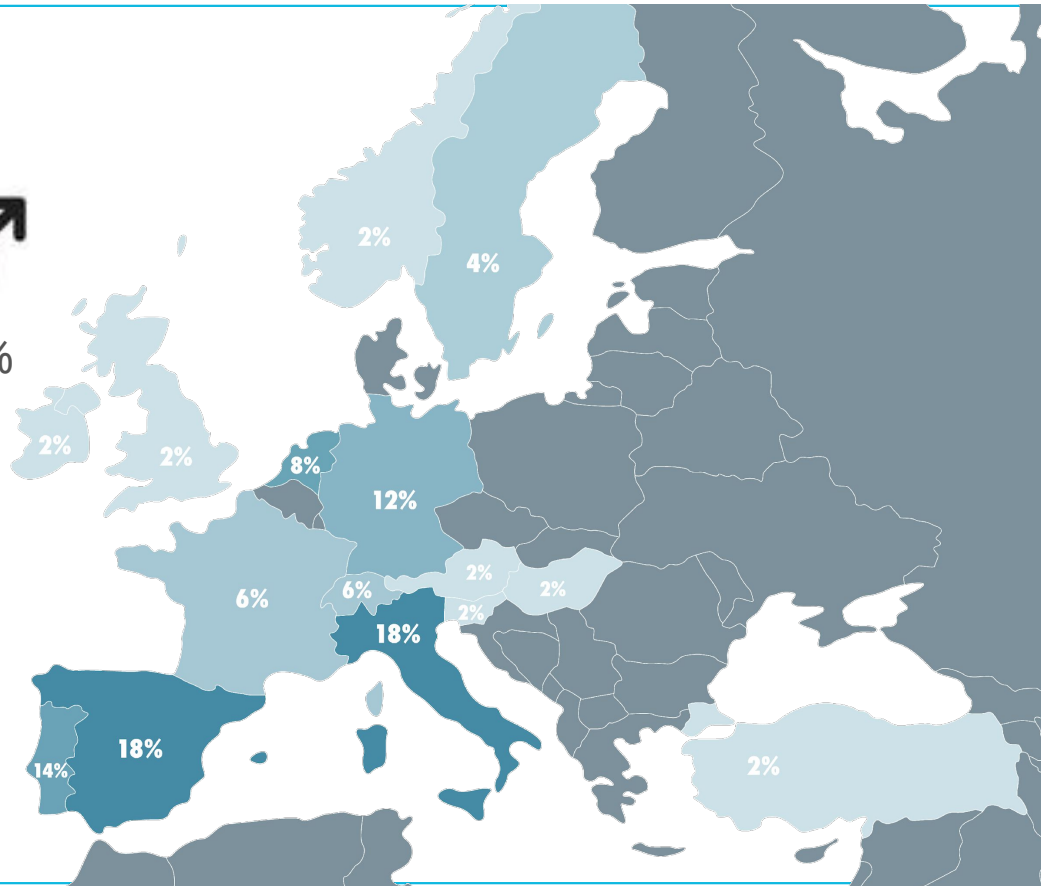


University 70%  
Public research  
organisations 22%  
SME 6%  
Other 2%

#### Gender

♀ 34%    ♂ 66%

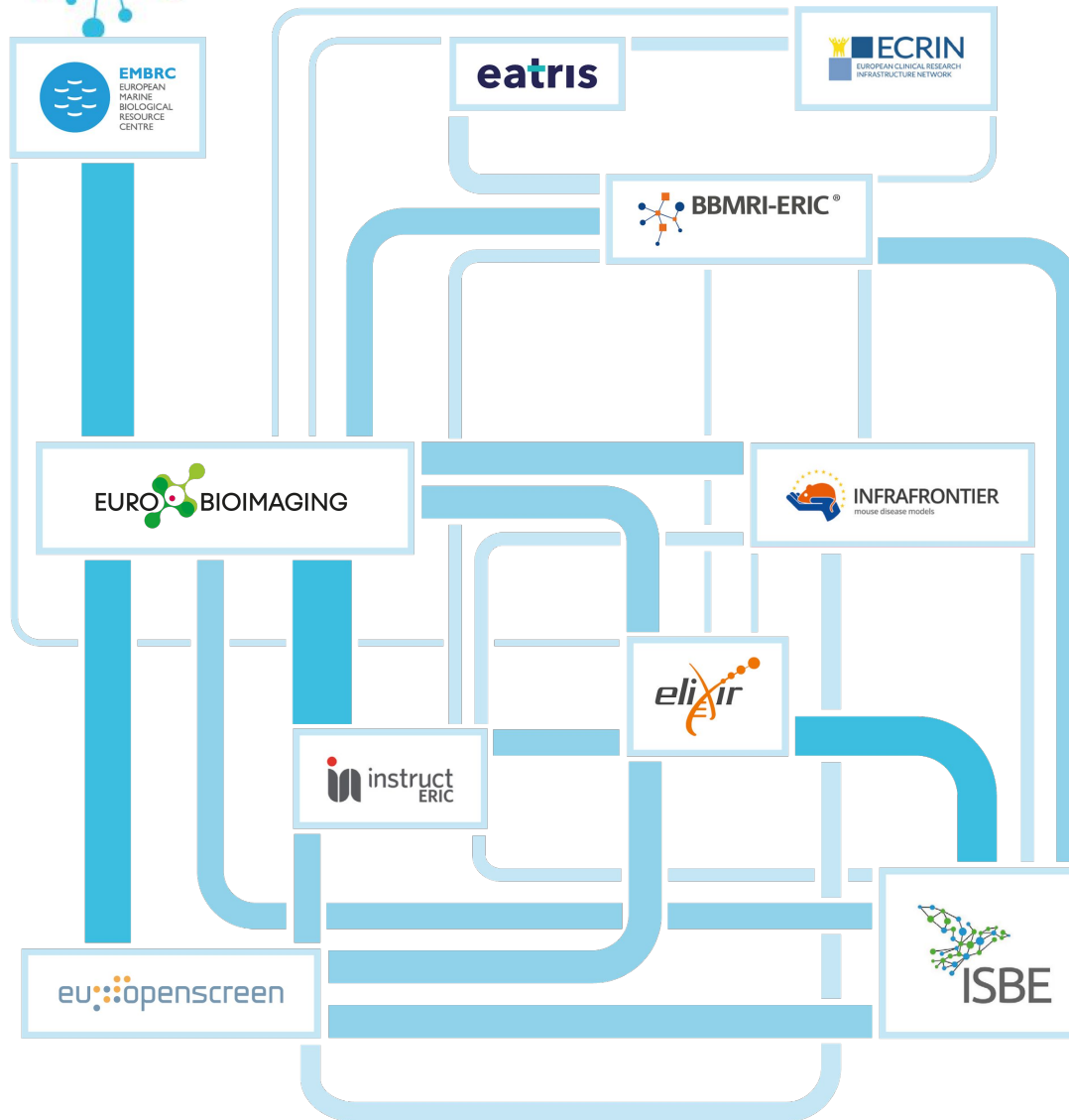
Users include scientists  
at all career levels



**37 projects passed the evaluation process & benefit from open access to technologies, services & expertise plus the CORBEL travel grant**



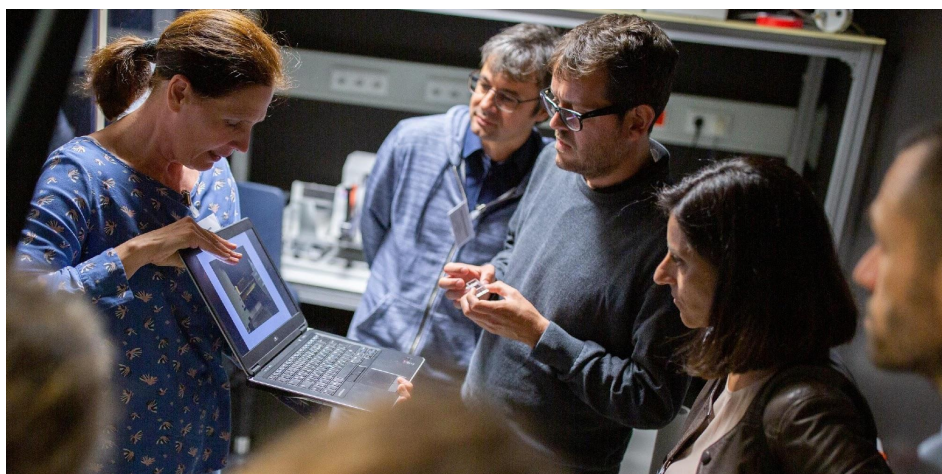
# Scientists build their own pipelines between RIs



All eligible Open Call applications (53) considered



# Continued project support and interaction drive Open Call projects







## Benefits for Users and Service Providers

### Users' benefits

- Access to otherwise inaccessible technologies & highly skilled technical expertise
- Financial support to conduct project
- Producing high-quality data for their research
- Establishing long-term collaborations
- Improving skill set and technology know-how

### Service Providers' benefits

- Building bridges between life science communities
- Working on new challenges can push their systems to new frontiers
- Increasing their visibility, also towards industry
- Training and personal development
- Centralized project coordination





## User Testimonials



‘When we read about the CORBEL Open Call we thought it was a great opportunity to gain access to important Research Infrastructures with experience that is not at all present in our laboratory. Through this call, we have filled a gap improving our research.’

‘It enables a global view of the project and makes the process faster and simpler.’

The invaluable impact of CORBEL on our research was the possibility to obtain a huge amount of results and scientific information in an extremely short time and to learn from experts the best strategies to set up a screen.

## CORBEL finishes – what now?

WP4 strategy to sustain achievements such as....

Increased  
interaction and  
collaboration  
between BMS RIs

Driving creation of  
scientific results,  
many publications in  
preparation

Increased  
visibility of RI  
services

Shaping cross-RI  
service provision

Deeper  
knowledge of  
the purpose of  
other RIs

Central contact  
point between  
different RIs for  
consultation



# Bilateral Collaboration Agreements to support common access – first ones signed, more to come!



## Mechanism of Collaboration - examples

- ❖ **Exchange (visits)** of RI operational and managerial staff
- ❖ **Promotion** of the RIs both collectively as well as individually
- ❖ **Providing support** for projects interested in making the transition from one RI to the other
- ❖ Allowing a **fast-track** for projects previously scientifically evaluated by the other RI
- ❖ Developing a strategy for **realizing funds** for interdisciplinary projects

eu:openscreen







# Promotion of the RIs both collectively as well as individually – e.g. FEBS 2019, Krakow







## Increased visibility of RI services



- Brochure demonstrates benefits of working with RIs
- Addressed to scientists and policy makers



- Advertisement of RI services on joint website (WP2 -> now BBMRI)

- Production of 2 videos highlighting RI services and success stories
- for LS RI website and individual RI websites
- Conferences
- Social media



# Thank you!



J. Ellenberg,  
EMBL-HD  
[EuBI]



J. Steinkötter,  
MDC  
[ISBE]



F. Leitner,  
EMBL-HD  
[EuBI]



S. Hansen,  
MDC  
[ISBE]



M. Vidal,  
MDC  
[ISBE]



C. Popp,  
MDC  
[ISBE]



A. Keppler,  
EMBL-HD  
[EuBI]



K. Herzog,  
EU-OS



T. Miletic,  
EU-OS



R. Cattaneo,  
CNRS  
[EMBRC]



M. Siaud,  
CNRS  
[EMBRC]



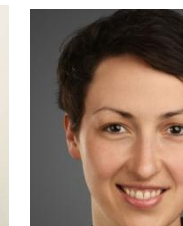
E. Houlston,  
UPMC  
[EMBRC]



S. Battaglia,  
ECRIN



F. Schmidt-Tremmel,  
Elixir



C. Hauk,  
DSMZ-  
[MIRRI]



N. Haley,  
INSTRUCT



F. Sanderson,  
INSTRUCT



S. Daenke,  
INSTRUCT

All technical and administrative staff of the participating **service providers** from **BBMRI, EATRIS, ECRIN, Elixir, EMBRC, EU-OPENSOURCE, Euro-BiolImaging, Infrafrontier, Instruct and ISB**



S. Jupp,  
EBI [Elixir]



N. Juty,  
EBI [Elixir]

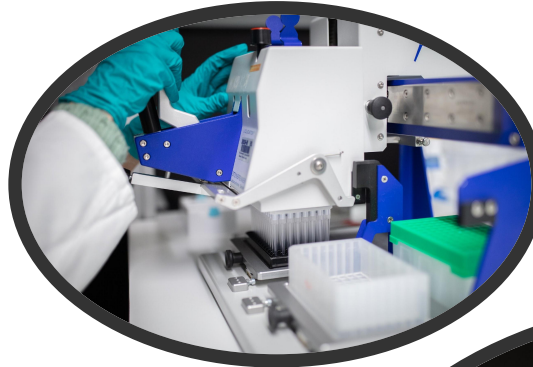


V. Matser,  
EBI [Elixir]



# Screening for active compounds against acute myeloid leukemia

- ★ Maria Paola Martelli, University of Perugia
- ★ Roberta Ranieri, University of Perugia
- ★ Martin Neuenschwander, FMP, EU-Openscreen



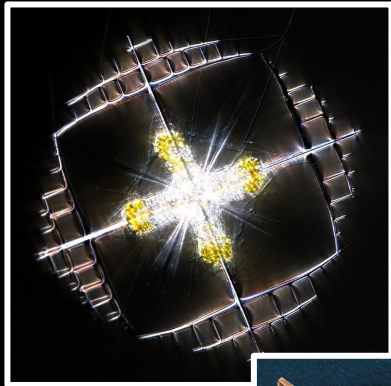




# Chloroplast plasticity in planktonic symbioses unveiled by nanoscale imaging



- ★ Johan Decelle, University of Grenoble Alpes
- ★ Raffaella Cattaneo, Institut de la Mer de Villefranche, EMBRC







# Sharks, skeletons and spectral imaging: Exploring the hidden life of chondrocytes and tessellated cartilage



- ★ Mason Dean, MPI of Colloids and Interfaces
- ★ Júlia Chaumel, MPI of Colloids and Interfaces
- ★ María Marsal, Institute of Photonic Sciences, Euro-Biolmaging

